



Spring-Top Standoffs

Series CFKSSB



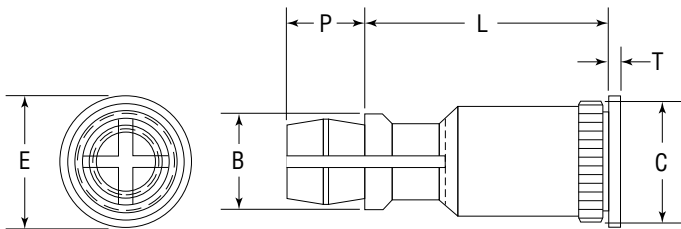
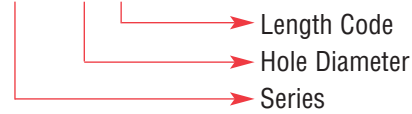
CFKSSB spring-top standoffs are designed for permanent installation into PC boards by pressing into a drilled or punched hole. The spring-action post provides quick attachment and removal of PC boards, with a simple snap eliminating the problems associated with loose hardware.

Series	Material	Finish
CFKSSB	CDA-360 Brass	None

Use in: PC Boards with Rockwell Hardness B-65 or less.

Part Number Structure:

CFKSSB 156-8



Dimensions & Specifications

INCH (in.)	Series	Top Board Mounting Hole Diameter Code	Length L ± .005 in. (Length Code In 32nds Of An Inch)										B ± .005	C ± .003	E ± .005	P ± .005	T ± .005
			.250	.312	.375	.437	.500	.562	.625	.750	.875	1.000					
	CFKSSB	156	-8	-10	-12	-14	-16	-18	-20	-24	-28	-32	.188	.226	.250	.141	.020

Dimensions & Specifications

METRIC (mm)	Series	Top Board Mounting Hole Diameter Code	Length L ± .13mm (Length Code In Millimeters)										B ± .13	C ± .08	E ± .13	P ± .13	T ± .13
			8	10	12	14	16	18	20	22	25						
	CFKSSB	4 MM	-8	-10	-12	-14	-16	-18	-20	-22	-25	4.77	5.74	6.35	3.58	.51	

Continued on next page.



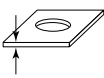
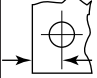
Spring-Top Standoffs

Series CFKSSB



Continued from previous page.

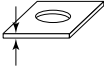
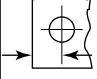
Installation & Performance Data

	Bottom Panel (Fixed)						Top Panel (Removable)				
	Bottom Mounting Hole +.003 -.000	Material	Hardness Max.	Thickness Min.		Location Tolerance Max.	Top Mounting Hole +.003 -.000	Material	Thickness Range		
Series											
INCH (in.)	CFKSSB	.213	PC board	HRB65	.050	.220	± .005	.156	PC board or metal	.040-.070	.100

Installation & Performance Data

INCH (in.)	Bottom Panel (Fixed)			Top Panel (Removable)		
	Sheet Thickness & Sheet Material	Installation (lbs.)	Pushout (lbs.)	Max. first on force (lbs.)	Min. first off force (lbs.)	Min. 15th off force (lbs.)
CFKSSB	.060 FR-4 Fiberglass	500	110	13	3.0	1.0

Installation & Performance Data

	Bottom Panel (Fixed)						Top Panel (Removable)				
	Bottom Mounting Hole +.08 -.00	Material	Hardness Max.	Thickness Min.		Location Tolerance Max.	Top Mounting Hole +.08 -.00	Material	Thickness Range		
Series											
METRIC (mm)	CFKSSB	5.4	PC board	HRB65	1.25	5.6	± .13	4.0	PC board or metal	1-1.8	2.5

Installation & Performance Data

METRIC (mm)	Bottom Panel (Fixed)			Top Panel (Removable)		
	Sheet Thickness & Sheet Material	Installation (kN)	Pushout (N)	Max. first on force (N)	Min. first off force (N)	Min. 15th off force (N)
CFKSSB	1.52 FR-4 Fiberglass	2.2	484	58	13	4.0