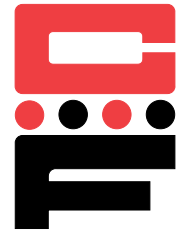


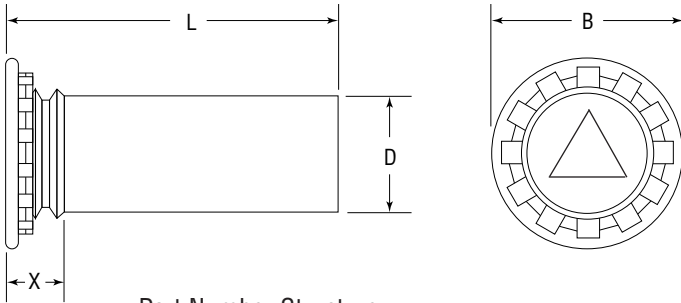


Self-Clinching Pins

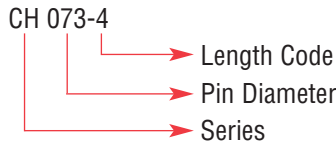
Series CH, CHN, CHS & CHA



CH pins provide a strong flush-head assembly in material as thin as .040 inches (1 mm) with high pushout performance.



Part Number Structure:



Series	Material	Finish
CH	Carbon Steel, Heat-treated	Zinc* Clear
CHN	Carbon Steel, Non-Heat-treated	Zinc* Clear
CHS	300 Series Stainless Steel	Passivated ASTM A380
CHA	2024-T4 Aluminum	None

*See Finish Spec. on Page 6.

- Use in:
- CH – Materials with HRB-80 or less.
 - CHN – Materials with HRB-50 or less.
 - CHS – Materials with HRB-70 or less.
 - CHA – Materials with HRB-50 or less.

Dimensions & Specifications

INCH (in.)	D Pin Dia. ± .002	L Length ± .015 in.										B ± .015	X Max.	Min.	+ .003 - .000	Min.
		.250	.3125	.375	.500	.625	.750	.875	1.00	1.25	1.50					
.073	-4	-5	-6	-8	-10						.15	.075	.040	.085	.19	
.084	-4	-5	-6	-8	-10	-12					.16	.085	.040	.099	.22	
.094	-4	-5	-6	-8	-10	-12					.18	.085	.040	.111	.22	
.103	-4	-5	-6	-8	-10	-12					.18	.085	.040	.118	.22	
.106	-4	-5	-6	-8	-10	-12					.19	.090	.040	.125	.22	
.116	-4	-5	-6	-8	-10	-12	-14	-16	-20		.21	.090	.040	.137	.25	
.120	-4	-5	-6	-8	-10	-12	-14	-16	-20		.21	.090	.040	.137	.25	
.137	-4	-5	-6	-8	-10	-12	-14	-16	-20	-24	.23	.090	.040	.157	.28	
.141	-4	-5	-6	-8	-10	-12	-14	-16	-20	-24	.24	.090	.040	.163	.28	
.160		-5	-6	-8	-10	-12	-14	-16	-20	-24	.26	.100	.040	.189	.28	
.167		-5	-6	-8	-10	-12	-14	-16	-20	-24	.26	.100	.040	.189	.28	
.173		-5	-6	-8	-10	-12	-14	-16	-20	-24	.26	.100	.040	.197	.28	
.207			-6	-8	-10	-12	-14	-16	-20	-24	.32	.135	.062	.236	.31	
.215				-8	-10	-12	-14	-16	-20	-24	.34	.135	.062	.250	.31	
.223				-8	-10	-12	-14	-16			.34	.135	.062	.250	.31	
.273				-8	-10	-12	-14	-16	-20	-24	.38	.160	.093	.312	.38	
.281				-8	-10	-12	-14	-16			.38	.160	.093	.312	.38	

Note: 1. Pins are available in lengths up to 3 in. (76.2 mm) upon special order.
 2. Tapered-point pins are available upon request, subject to minimum order quantity.

Continued on next page.



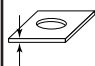
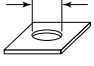
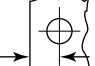
Self-Clinching Pins

Series CH, CHN, CHS & CHA



Continued from previous page.

Dimensions & Specifications

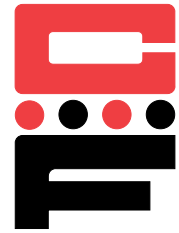
METRIC (mm)	D Pin Dia. ± .05	L Length ± .4mm										B ± .4	X Max.	 Min.	 + .08 - .00	 Min.
		6	8	10	12	15	18	20	25	30	35					
	3mm	-6	-8	-10	-12	-15	-18	-20	-25	-30	N/A	5.3	2.3	1.0	3.5	6.4
	4mm	N/A	-8	-10	-12	-15	-18	-20	-25	-30	-35	6.0	2.3	1.0	4.1	7.1
	5mm	N/A	-8	-10	-12	-15	-18	-20	-25	-30	-35	7.5	2.55	1.0	5.5	7.6



Self-Clinching Pins

Series CGS

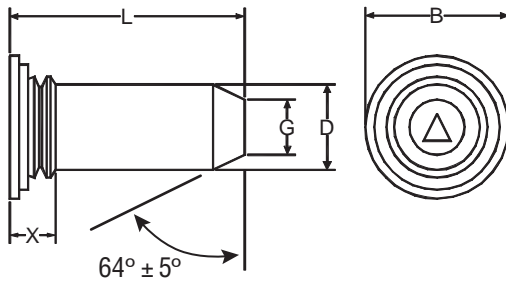
(Tapered Guide Pins)



CGS Tapered Guide Pins provide a strong flush-head assembly in materials as thin as .040 in. (1mm) with high pushout resistance. A tapered end allows ease of locating mating hole in a variety of alignment and pivot applications.

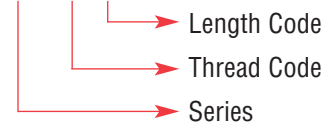
Series	Material	Finish
CGS	300 Series Stainless Steel	Passivated ASTM A380

Use in: Materials with Rockwell Hardness of B-70 or less.



Part Number Structure:

CGS-125-8



Dimensions & Specifications

INCH (in.)	Pin Dia. D ± .002	L Length ± .015 in.					B ± .015	X Max.	G ± .006	Min.	+ .003 - .000	Min.
		.375	.500	.625	.750	1.00						
.125		-6	-8	-10	-12		.205	.090	.090	.040	.144	.250
.187		-6	-8	-10	-12	-16	.270	.090	.132	.040	.205	.280
.250			-8	-10	-12	-16	.335	.090	.177	.040	.272	.310

METRIC (mm)	Pin Dia. D ± .05	L Length ± .4mm					B ± .4	X Max.	G ± .15	Min.	+ .08 - .00	Min.
		8	10	12	16	20						
3mm		-8	-10	-12	-16		5.2	2.29	2.05	1	3.5	6.4
4mm		-8	-10	-12	-16		6.12	2.29	2.82	1	4.5	7.1
5mm			-10	-12	-16	-20	7.19	2.29	3.53	1	5.5	7.6
6mm				-12	-16	-20	8.13	2.29	4.24	1	6.5	7.9

Installation & Performance Data

INCH (in.)	Pin Dia. D ± .002	Test Material	Sheet Hardness HRB	Installation (lbs.)	Pushout (lbs.)	METRIC (mm)	Pin Dia. D ± .05	Test Material	Sheet Hardness HRB	Installation (kN)	Pushout (kN)
	Steel	62	6500	245		Steel	65	22	.97		
.187	Aluminum	18	6500	225	4mm	Aluminum	19	22	.88		
	Steel	60	8000	395		Steel	66	26.4	1.53		
.250	Aluminum	18	7000	265	5mm	Aluminum	18	28.6	1.00		
	Steel	62	9000	495		Steel	60	35.2	1.75		
	Aluminum	18	7000	265	6mm	Aluminum	18	30.8	1.05		
	Steel	62	9000	495		Steel	62	39.6	2.05		