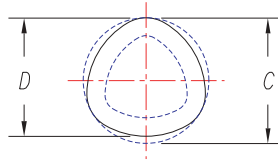
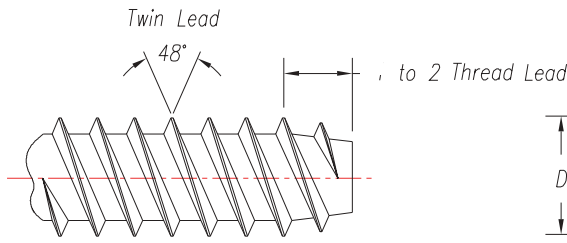
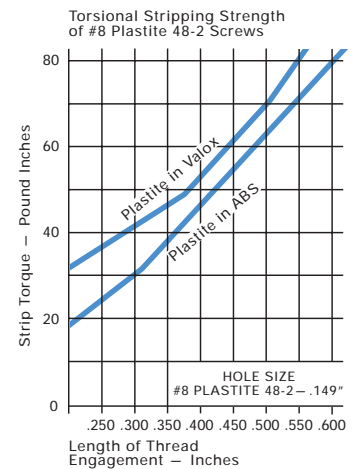
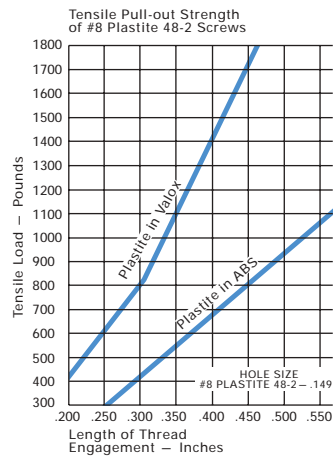
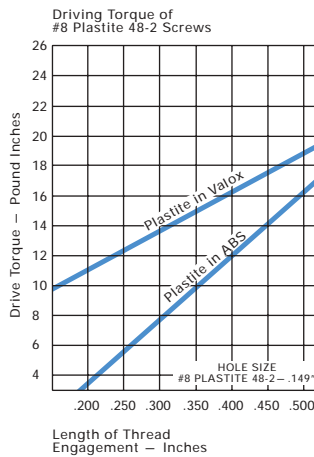




# PLASTITE® 48-2 Screws



PLASTITE® 48-2 TRILOBULAR™ thread-rolling screws have twin lead threads to provide faster, more efficient insertion. The sharp 48° thread profile increases holding strength and reduces material displacement and boss bursting tendencies. Drive and strip torques are higher, making drive tool adjustments simple. NOTE: Component and boss design should allow for much faster engagement than with single lead screws.



## MATERIAL:

Low Carbon Steel, Suitably Hardened and Tempered

## FINISH:

As Requested

## LENGTH TOLERANCES:

### Nom.

Length	Tol.
Thru 3/4"	±.030"
Over 3/4"	±.050"
Over 1/4" Dia.	
All Lengths	±.050"

Screw Size T.P.I. (1)	"C"		"D"		Minimum Out-of- Round	Recommended Pilot Hole Sizes	
	Max.	Min.	Max.	Min.		Soft Ductile Materials	Brittle Materials
2 (.089) - 28	.092	.086	.089	.083	.002	.076	.080
* 3 (.106) - 24	.110	.104	.106	.100	.002	.088	.094
4 (.123) - 20	.127	.121	.123	.117	.002	.100	.106
6 (.143) - 19	.147	.141	.143	.137	.003	.122	.128
* 7 (.160) - 18	.166	.160	.160	.154	.004	.134	.142
8 (.179) - 16	.185	.179	.179	.173	.004	.149	.158
* 9 (.193) - 15	.199	.193	.193	.187	.004	.162	.172
10 (.208) - 14	.212	.206	.208	.202	.004	.175	.185
12 (.230) - 11	.235	.229	.230	.224	.005	.195	.206
* 12 (.226) - 14	.232	.226	.226	.220	.005	.195	.205
1/4 (.268) - 10	.276	.270	.268	.262	.006	.224	.240
5/16 (.335) - 9	.345	.335	.335	.325	.006	.286	.303

\* Non-standard size

1. Size/TPI - The PLASTITE® 48-2 screw size designation combines the commonly used numerical screw size with the major diameter (Max. "D"), as measured with ordinary micrometers, followed by the number of threads per inch.

2. Recommended pilot hole sizes are subject to variation dependent on depth of engagement, ease of driving required and material being tapped. Users of PLASTITE® 48-2 screws should perform their own test to determine the most efficient pilot hole size for their own

particular use, or contact the application engineering department of a qualified supplier or REMINC.